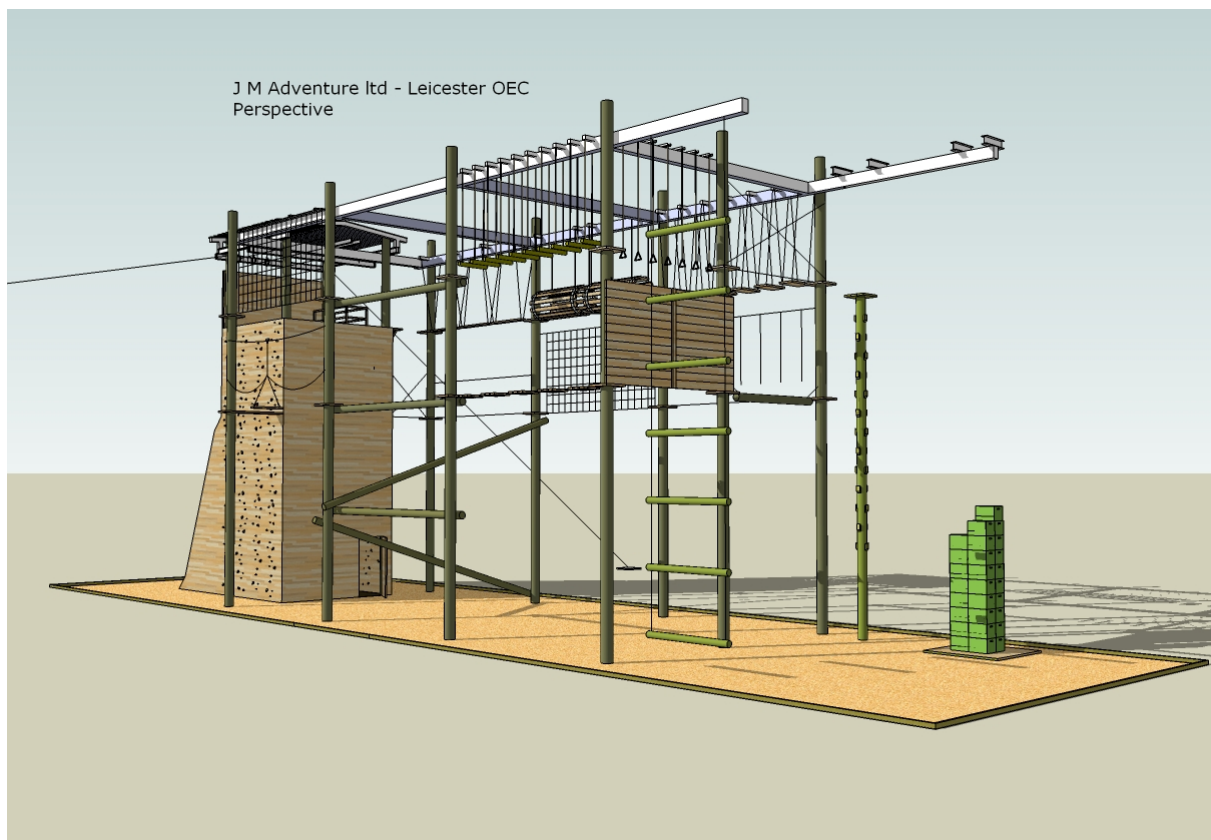


## Integrated 2 level Aerial Trekking, Developmental Ropes Course & Climbing Tower £140 - 150 k + Vat



### Features:

- Conforms to prEN 15567-1 <sup>3</sup>safety requirements and test methods<sup>2</sup>
- Steel beams that negate the use of wire guys and belays, reducing the area required to build and secure the course and eliminating the need for daily inspections that are required with wire cables.
- 25 year warranty on all workmanship
- Vertical Life Lines, a Ladsafe & Staples for un-belayed instructor access
- Safety signage
- Retractable or removable lower components to prevent unauthorized access
- Stainless steel belay friction points
- Zinc plated beam trolleys
- Tracer Lines
- Tested ground belay anchors
- Internal access shaft for all ability access and SRT.
- Access to the lower slab to allow abseiling from a introductory height
- Pressure Treated Timbers with 'half lap' to prevent 'finger trapping'
- Pronged T- Nut every 300mm square to allow routes to be altered
- 0.5 ton chain hoist to raise the incline log
- Risk Assessments and Operating Procedures

### Elements:

- Double Leap of faith - Two Person
- High All Aboard / Peg Pole climb option - Four Person
- Jacobs Ladder (removable bottom rungs for security) - Four Person
- Crate Challenge (includes 100 crates) - Four Person
- 2 x Incline Log (retractable for security)
- Four Climbing & Abseiling Faces
- 3 x Balance Beams
- 20 Aerial Trekking Traversing Elements over two levels
- Zip Wire

### Optional Extras:

- Lightning Conductors
- Gladiator Challenge

- Six Person High All Aboard
- Over Hanging Jacobs Ladder
- Giants See Saw
- Galvanised Steel Beams
- Red Point - Self belay device
- Fencing
- Fan Descender

**Dimensions:**

- Height - 13m
- Length - 30m
- Width - 8m
- Pole Depth - 2m
- Ground Space required (minimum) - 16m x 38m
- Build Time - 40 Days

**Extra Costs for Consideration:**

- Personal Protective Equipment (PPE) - Please contact Us
- Training - Please contact Us
- Ground Preparation and Covering - Please contact Us
- Annual Inspection Charge for Integrated Rectangle Course & Climbing Wall - Guide Price £ 650.00 + Vat